

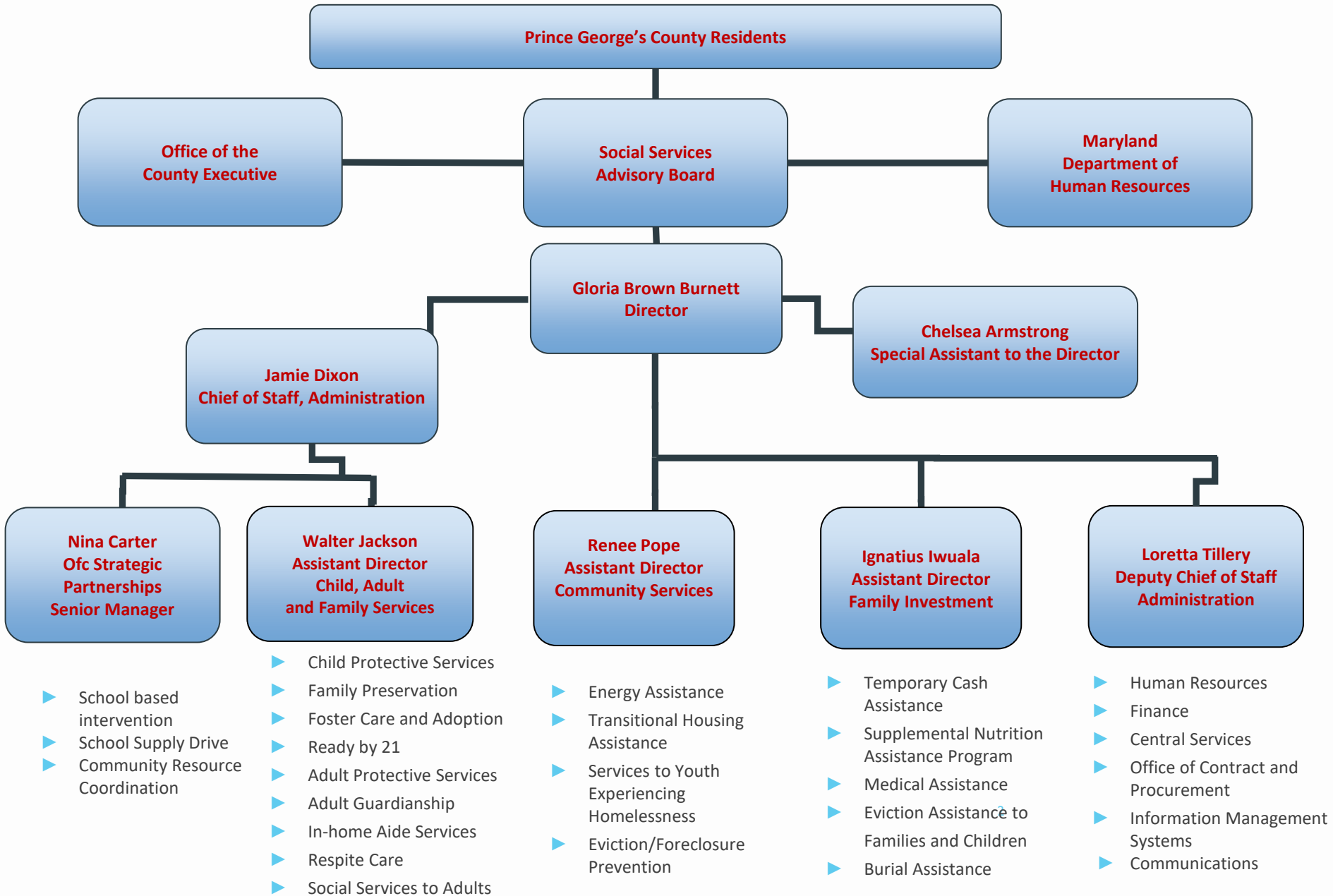


**Prince George's County
Department of Social Services**

Municipalities in the Know August 2021

Building Stronger Communities, One Family at a Time...

Organizational Structure DSS





**Prince George's County
Department of Social Services**

Services to Benefit Children and Families

Services Overview

- ▶ Child Protective Services*
- ▶ Child Support First Services
- ▶ Crisis Intervention Workers
- ▶ Family Centered Practice Model*
- ▶ Family Preservation*
- ▶ Foster Care and Adoption*
- ▶ Ready by 21*
- ▶ Project Safe Haven
- ▶ Services to Youth Experiencing Homelessness & Unaccompanied Youth*
- ▶ Community Resource Coordination Project
- ▶ School Supply Drive

**Indicates the programs for which a slide is included.*



School-Based Intervention

Prince George's County Department of Social Services in partnership with Prince George's County Public Schools (PGCPS) provides a School and Community Engagement Advocate to support universal attendance, behavior, and other student success initiatives.

Services Provided to Students and Families

- ▶ Referrals for food, housing, employment, and mental health services.
- ▶ Case management to support student experiencing chronic absenteeism, academic failure, teenage pregnancy, and technology disparities

Special Initiatives

- ▶ Learning Villages
- ▶ Holiday Sharing
- ▶ Christmas Toy Drive
- ▶ Back to School Bookbag and Supply Drive
- ▶ 9th Grade Retention/Grade Recovery Program

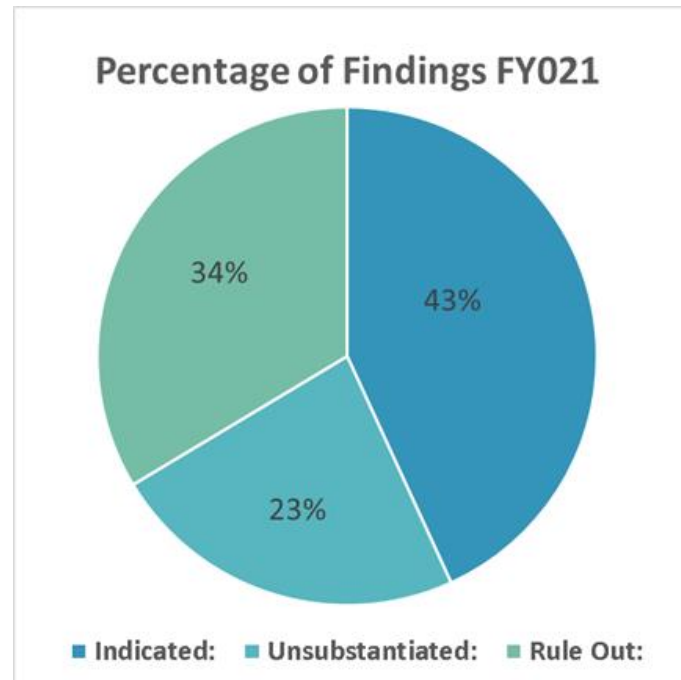


Child Protective Services (CPS)

A state mandated program responsible for insuring the safety and well-being of children and families in the community through the receipt and investigation of allegations of physical abuse, sexual abuse, neglect and mental injury of children under the age of 18 years.

Community Impact

- ▶ The Department received 5,193 child protective service referrals in fiscal year 2021 as of May 2021
- ▶ The Department conducted 1,943 child protective service investigations during fiscal year 2021 as of May 2021.



Family Preservation

Family Preservation is a home-based service designed to meet the specific needs of individual families whose children are at imminent or high risk of an out-of-home placement.

The primary goals are:

- ▶ To enhance the parent's ability to create a safe, stable and nurturing home environment that promotes healthy child development
- ▶ To prevent out-of-home placement where safety can be promoted

Community Impact:

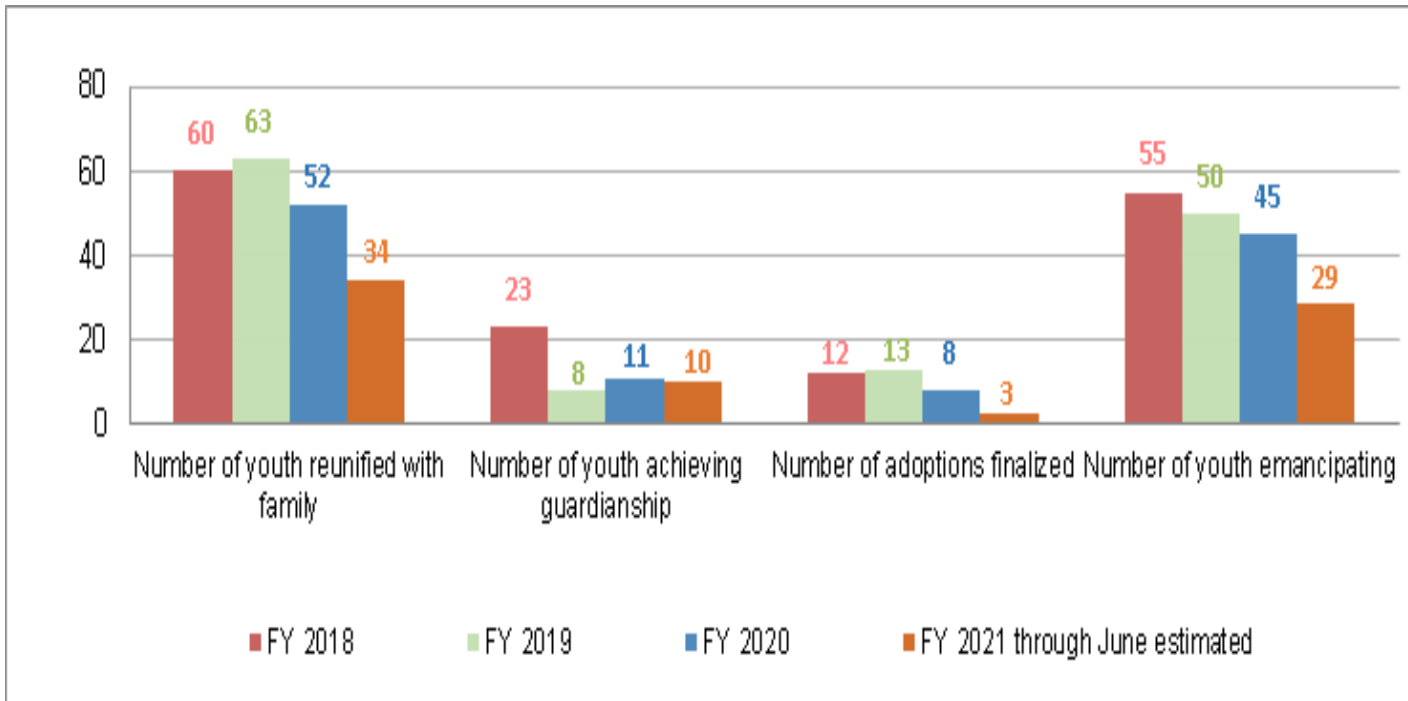
- ▶ The Department served a monthly average of 115 families through in home services in fiscal year 2020.



Foster Care

Foster Care provides short-term care and supportive services to children who are unable to live at home due to child abuse and neglect. Children are placed in family foster homes, kinship care, as well as, congregate care.

Community Impact:



Ready By 21

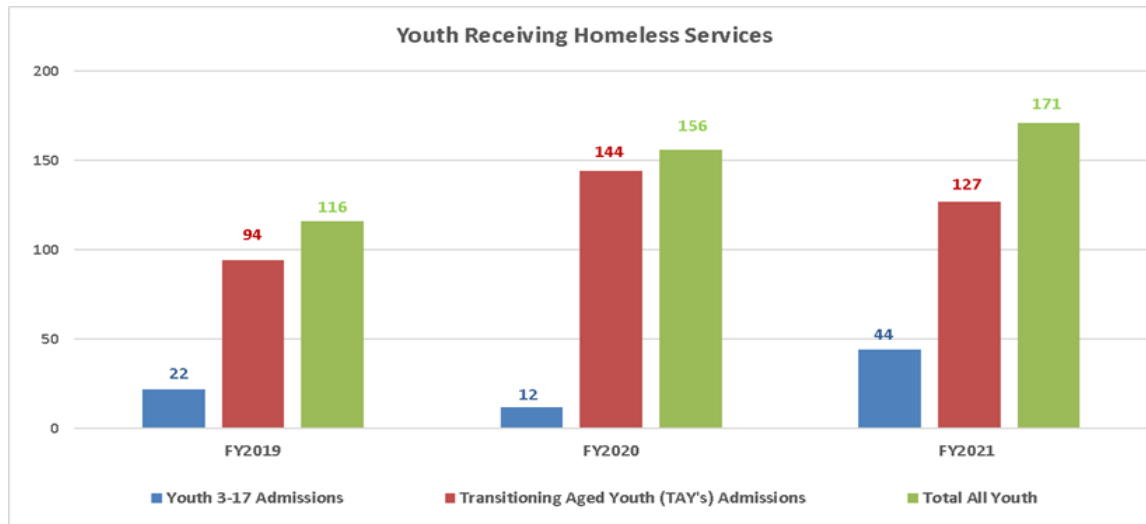
Ensures that youth are provided with the opportunity to achieve positive outcomes as adults, the department has realigned its relationships with public and private sectors thus expanding the continuum of services.

- ▶ This model will prepare youth approaching adulthood and provide supportive services to youth as they age out of care.
- ▶ The strategies employed are specific to each youth and tailored to best support their needs.
- ▶ The teenage population represents 55% of the total number of children in care in Prince George's County in FY2020.



Youth Experiencing Homelessness and Unaccompanied Youth and Young Adults 13-24

- ▶ Homeless Youth Hotline (24/7/365)
#1-855-4-YOUTH-1
- ▶ Emergency Shelter beds
 - ▶ Promise Place: Dormitory style
 - ▶ Maryland Multicultural Youth Center (MMYC)
Host Homes: Host families
 - ▶ St. Ann's - Dormitory and Apartment style
- ▶ Transitional Shelter beds
 - ▶ Youth Development Program



FY2021 Data is through June 2021





**Prince George's County
Department of Social Services**

Services to Protect Adults Experiencing Vulnerabilities

Services Overview

- ▶ Adult Protective Services *
- ▶ Adult Guardianship Program
- ▶ In-home Aide Services
- ▶ Long-Term Care Program
- ▶ Respite Care *
- ▶ Senior Care Program
- ▶ Social Services to Adults
- ▶ Transitional Emergency Medical & Housing Assistance

**Indicates the programs for which a slide is included.*



Adult Protective Services (APS)

This is a mandated program which serves vulnerable adults age 18 and over. The purpose APS is to investigate allegations of abuse, neglect, self-neglect, and exploitation of adults who are unable to protect their own interest and are at risk of harm. APS provides continuing case management services to protect the health, safety, and welfare of vulnerable adults.

Community Impact

- ▶ 99% of adults with DSS contact are without a recurring claim of abuse within six months of first claim



Respite Care

Respite Care Program is a supportive service intended to provide short term, temporary relief to the primary caregiver of an individual with a persistent or chronic physical or emotional disability. The relief is typically in the form of home health care, day care, or assisted living, up to 164 hours per year.





**Prince George's County
Department of Social Services**

Services to Stabilize the Household

Services Overview

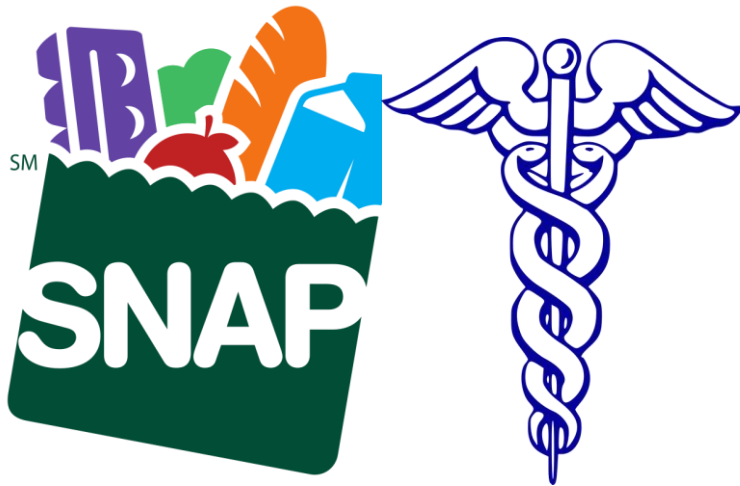
- ▶ Burial Assistance
- ▶ Emergency Assistance to Families with Children*
- ▶ Emergency Shelter
- ▶ Employment and Training Assistance *
- ▶ Energy Assistance*
- ▶ Eviction/Foreclosure Prevention Assistance
- ▶ Food Supplement Program *
- ▶ 2 Gen Next Step
- ▶ Services for Persons Experiencing Homelessness*
- ▶ Public Assistance 2 Entrepreneurship
- ▶ Rapid Re-housing
- ▶ Mass Care and Sheltering
- ▶ Medical Assistance *
- ▶ Maryland Money Market
- ▶ Temporary Cash Assistance *

**Indicates the programs for which a slide is included.*

Food Supplement Program & Medical Assistance

FSP

The Food Supplement Program (FSP) helps low-income households buy the food they need for good health and are used like cash to buy food.



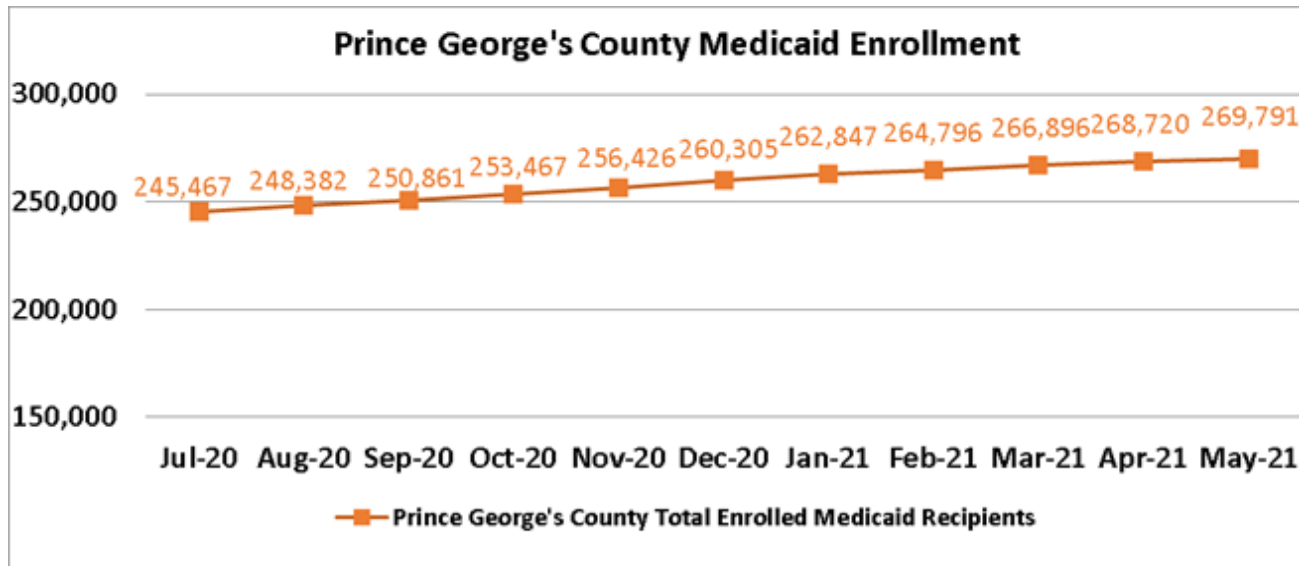
MA

Medical Assistance (MA), is a Program that pays the medical bills of certain low-income individuals. Administered by the State, it pays medical bills with Federal and State funds. Medicaid coverage is automatically granted to individuals receiving Supplemental Security Income (SSI), Temporary Cash Assistance (TCA), and Foster Care. Low-income families and individuals, including children, pregnant women, childless adults, and aged, blind, or disabled adults may also qualify for Medicaid.

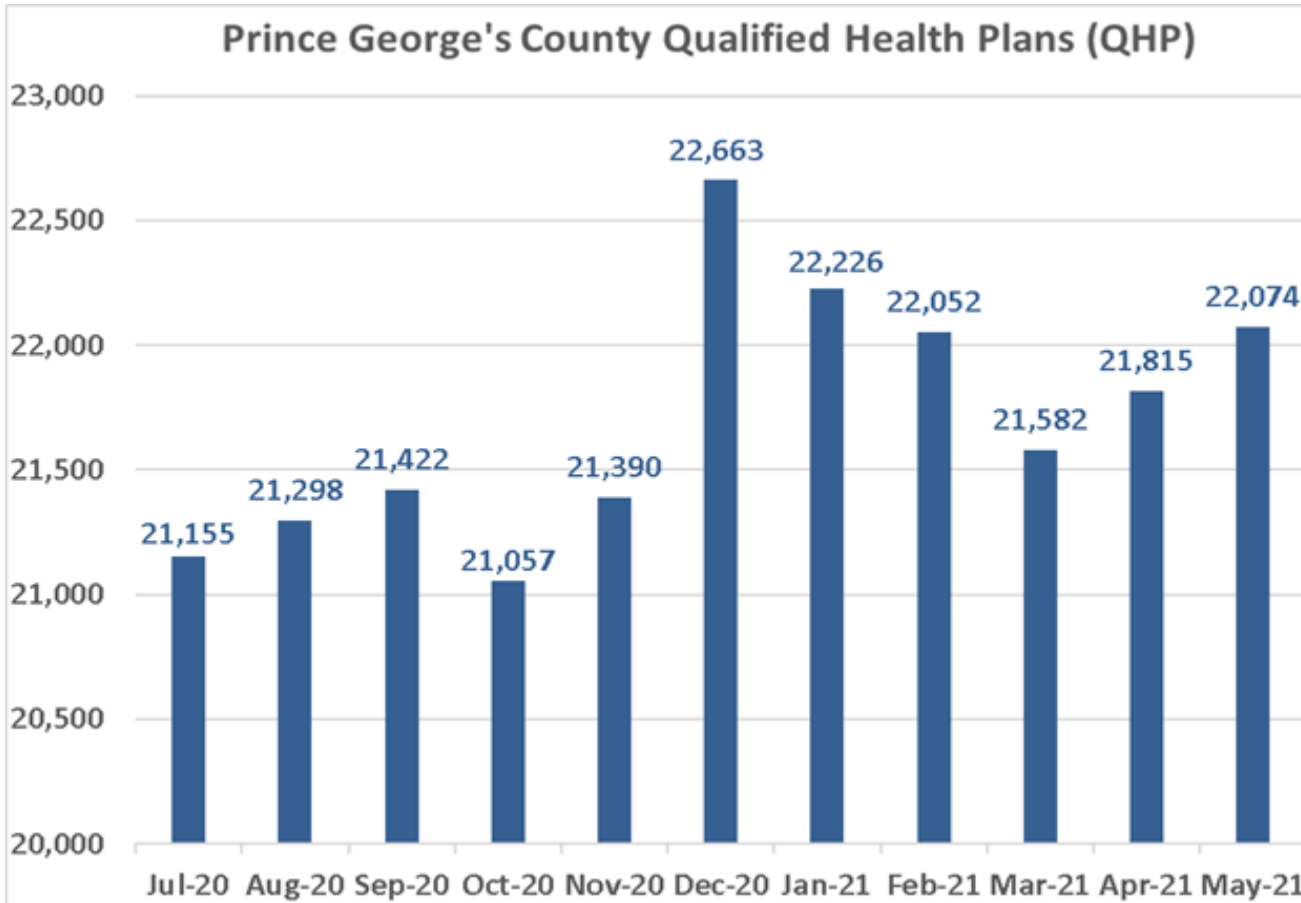


Healthcare Reform in Maryland

- ▶ In 2010, comprehensive health reform was passed into law in the form of the Patient Protection and Affordable Care Act (ACA). The law makes preventive care—including family planning and related services—more accessible and affordable for many Americans.
- ▶ Maryland has a long history of improving health care and health coverage for its residents. Since 2007, more than 310,000 Marylanders have received coverage as a result of expanding care and making healthcare more affordable.



Prince George's County Health Connect



Temporary Cash Assistance

Temporary Cash Assistance (TCA) provides cash assistance to needy families with dependent children when available resources do not fully address the family's needs and while preparing program participants for independence through work. Adults with dependent children applying for or receiving TCA must meet financial and technical eligibility requirements.

- ▶ Conditions of eligibility include cooperation with child support, participation in work activities and compliance with substance abuse provisions are relaxed due to COVID-19.
- ▶ 20% earned income is disregarded. The net earned and unearned income cannot exceed the benefit level paid for the assistance unit size and assets are limited to \$2,000.



To apply, residents should go online:
<https://mymdthink.maryland.gov/home/#/>



Energy Assistance

- ▶ Social Services helps residents pay their utility bills, minimize heating crises, and make energy costs more affordable.
- ▶ PGCDSS provides a comprehensive energy package, which includes the Maryland Energy Assistance Program and the Electric Universal Service Program and has links to the community and the customer.
- ▶ These programs promote energy conservation, customer financial responsibility and energy independence.



To apply, residents should go online:

[https://dhs.maryland.gov/
office-of-home-energy-programs/](https://dhs.maryland.gov/office-of-home-energy-programs/)

Homeless Services

Homeless services are provided to individuals and families who are literally homeless (living on the street or in a dwelling not fit for human habitation) or at imminent risk of homelessness (are within 14 days of losing their primary residence).

These services are intended to:

- ▶ Support the goal of preventing and ending homelessness through
 - ▶ Diversion,
 - ▶ Shelter assistance,
 - ▶ Rapid re-housing, while minimizing the trauma and dislocation caused to homeless individuals, families, and communities by homelessness
- ▶ Promote access to and effective utilization of mainstream programs by homeless individuals and families
- ▶ Optimize self-sufficiency among individuals and families experiencing homelessness.

Community Impact

- ▶ To access shelter services, residents should call 1-888-731-0999.
- ▶ To report a person experiencing homelessness for follow up by the street outreach team, email streetoutreach.pgc@maryland.gov



Emergency Assistance to Families with Children

EAFC provides emergency cash assistance to families who need emergency help to prevent eviction, foreclosure, utility cutoff, etc. An eligible family may receive benefits once in a 24-month period.

Program Requirements include:

- ▶ Families must have one or more children under 21 and living with them.
- ▶ Must present proof that they are behind on rent and have been/will be evicted.
- ▶ Present notice from utility companies that services have been/will be cut off.



Access to Services

- ▶ **Child Protective Services**
(301) 909-2450
- ▶ **Adult Protective Services**
(301) 909-2450
- ▶ **SNAP, TCA, Medical Assistance**
mydmthink.maryland.gov/home/#/
1 (800) 332-6347
- ▶ **Medical Assistance**
marylandhealthconnection.gov/
- ▶ **ACA—health insurance, private health insurance, Medicaid, other health access issues**
 - ▶ Prince George's County Health Connect
(301) 927-4500, (240) 719-2167
 - ▶ CASA Bi-Lingual Hotline
(301) 270-8432
Monday-Friday, 9am-4 pm
- ▶ **Energy Assistance**
dhs.maryland.gov/office-of-home-energy-programs/
- ▶ **Persons Experiencing Homelessness**
1 (888) 731-0999
To report a person experiencing homelessness for follow up by the street outreach team, email streetoutreach.pgc@maryland.gov
- ▶ **Office of Constituent Services**
(301) 909-7025



Access to Services

Apply for benefits services or receive support with benefit services...

- ▶ **DSS - Landover Office**
425 Brightseat Road
Landover, MD 20785
(301) 909-6000
- ▶ **DSS - Hyattsville Office**
6505 Belcrest Road
Hyattsville, MD 20782
(301) 209-5000
- ▶ **DSS - South County Office**
4325 28th Avenue
Temple Hills, MD 20748
(301) 316-7700
- ▶ **The Arc**
1300 Mercantile Ln, #220
Upper Marlboro, MD 20774
(301) 636-0606
- ▶ **La Union**
1401 University Boulevard E
Hyattsville, MD 20782
(301) 422-3700
- ▶ **Lutheran Social Services**
3799 East West Hwy
Hyattsville, MD 20782
(301) 209-5199
- ▶ **Greater Bladen Clinic**
 - ▶ 1472 Addison Road, South Capitol Heights, MD 20743
(240) 278-3084
 - ▶ 7450 Albert Road
Brandywine, MD 20613
(240) 543-4058
- ▶ **Dept of Aging**
6420 Allentown Road
Camp Springs, MD 20748
(301) 265-8452
- ▶ **LARS**
311 Laurel Avenue
Laurel, MD 20707
(301) 209-5138
- ▶ **One Stop Center**
 - ▶ 1801 McCormick Drive, #350
Upper Marlboro, MD 20774
(301) 618-8400
 - ▶ 312 Marshall Avenue, #604
Laurel, MD 20707
(301) 362-9708



Access to Services (cont.)

- ▶ **Greenbelt City Municipal Building**
25 Crescent Road
Greenbelt, MD 20770
(301) 474-8000
- ▶ **Bladensburg - Emerson House**
5999 Emerson Street
Bladensburg, MD 20710
(301) 779-6211
- ▶ **Community Solutions Center**
1309 Southview Drive
Oxon Hill, MD 20745
(301) 240-2694
- ▶ **Family Justice Center**
14757 Main Street
Upper Marlboro, MD 20772
(301) 952-2836
- ▶ **The Bridge Center at Adam's House**
5001 Silver Hill Road
Suitland, MD 20746
(301) 817-1900
- ▶ **University of Maryland Capital Region Medical Center**
901 Harry S Truman Drive, N
Largo, MD 20774
(240) 677-1142
- ▶ **Holy Cross Hospital**
1500 Forest Glen Road
Silver Spring, MD 20910
(240) 278-3190
- ▶ **Ft. Washington Hospital**
11711 Livingston Road
Fort Washington, MD 20744
(240) 603-3098
- ▶ **Southern Maryland Hospital**
7503 Surratts Road
Clinton, MD 20735
(240) 278-3086
- ▶ **Doctor's Community Hospital**
8118 Good Luck Road
Lanham, MD 20706
(240) 543-5529
- ▶ **Washington Hospital Center**
110 Irving St, NW
Washington, DC 20010
(240) 855-6730
- ▶ **Mary Center**
8905 Riggs Road
Adelphi, MD 20706
(240) 603-2726



Questions

